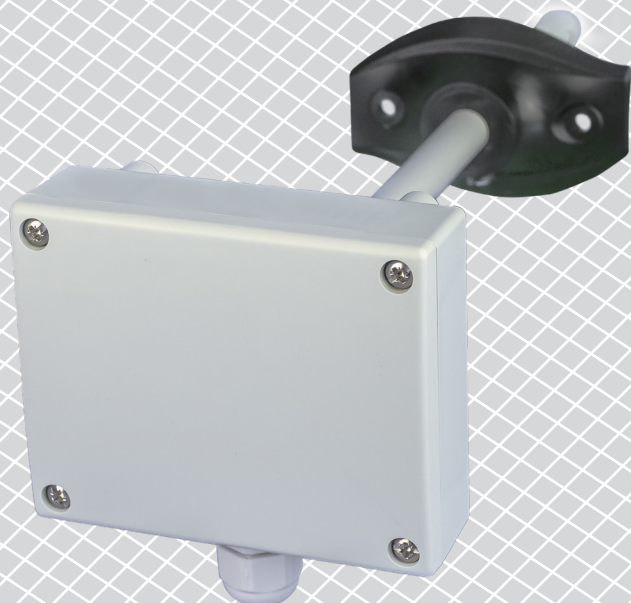


DSMFX-2R | MULTIFUNCTIONAL DUCT TRANSMITTER

Modbus register map



MODBUS REGISTER MAP

INPUT REGISTERS					
		Data type	Description	Raw data range	Values
1	Temperature reading	signed integer	Actual temperature level	-300–700	500 = 50,0°C
2	Output value 1 (T)	unsigned integer	Output value 1 (T)	0–1.000	0 = 0 % 1.000 = 100 %
3	Temperature alert flag	unsigned integer	Flag indicates that measured Temperature is outside set alert values. Set to '1' when the measured value is outside the Temperature alert values defined by holding registers 13 and 14	0–1	0 = Temperature measurement OK 1 = Temperature measurement too low / high
4	Temperature range limit flag	unsigned integer	Flag indicates that measured temperature is outside set range limit values. Set to '1' when the measured temperature is outside limit range values defined by holding registers 11 and 12	0–1	0 = Temperature range OK 1 = Temperature range too low / high
5	Humidity, temperature sensor fault	unsigned integer	Flag that shows if the communication with temperature & humidity sensor is lost	0–1	0 = No 1 = Yes
6–9			Reserved, return 0		
10	Relative humidity level	unsigned integer	Actual relative humidity level	0–1.000	1.000 = 100 % rH
11	Output value 2 (rH)	unsigned integer	Output value 2 (rH)	0–1.000	0 = 0 % 1.000 = 100 %
12	Relative humidity alert flag	unsigned integer	Flag indicates that measured Relative humidity is outside set alert values. Set to '1' when the measured value is outside the Relative humidity alert values defined by holding registers 21 and 22	0–1	0 = Relative humidity measurement OK 1 = Relative humidity measurement too low / high
13	Relative humidity range limit flag	unsigned integer	Flag indicates that measured Relative humidity is outside set range limit values. Set to '1' when the measured Relative humidity is outside limit range values defined by holding registers 19 and 20	0–1	0 = Relative humidity range OK 1 = Relative humidity range too low/high
14	Humidity, temperature sensor fault	unsigned integer	Flag that shows if the communication with temperature & humidity sensor is lost	0–1	0 = No 1 = Yes
15	Dew point level	signed integer	Calculated dew point	-700–700	200 = 20,0°C

INPUT REGISTERS					
		Data type	Description	Raw data range	Values
16–20			Reserved, return 0		
21	CO ₂ level	unsigned integer	Actual CO ₂ level	0–2.000	2.000 = 2.000 ppm
22	Output value 3 (CO ₂)	unsigned integer	Output value 3 (CO ₂)	0–1.000	0 = 0 % 1.000 = 100 %
23	CO ₂ alert flag	unsigned integer	Flag indicates that measured CO ₂ level is outside set alert values. Set to '1' when the measured value is outside the CO ₂ values defined by holding registers 25 and 26	0–1	0 = CO ₂ measurement OK 1 = CO ₂ measurement too low / high
24	CO ₂ range limit flag	unsigned integer	Flag indicates that measured CO ₂ is outside set range limit values. Set to '1' when the measured CO ₂ is outside limit range values set defined by holding registers 23 and 24	0–1	0 = CO ₂ range OK 1 = CO ₂ range too low / high
25	CO ₂ sensor fault	unsigned integer	Flag that shows if the communication with the CO ₂ sensor is lost	0–1	0 = No 1 = Yes
26–30			Reserved, return 0		

Note: The input registers can be read via the Modbus command: "Read input registers".

HOLDING REGISTERS

		Data type	Description	Raw data range	Values	Factory default values
1	Device slave address	unsigned integer	Modbus device address	1–247		1
2	Modbus baud rate	unsigned integer	Modbus communication baud rate	0–6	0 = 4.800 1 = 9.600 2 = 19.200 3 = 38.400 4 = 57.600 5 = 115.200 6 = 230.400	2
3	Modbus parity	unsigned integer	Parity check mode	0–2	0 = 8N1 1 = 8E1 2 = 8O1	1
4	Device type	unsigned integer	Device type. Read only	1.629–1.630	1.629 = DSMFG-2R 1.630 = DSMFF-2R	
5	HW version	unsigned integer	Hardware version of the device. Read only	XXXX	0x0100 = HW version 1.0	
6	FW version	unsigned integer	Firmware version of the device. Read only	XXXX	0x0220 = FW version 2.2	
7			Reserved, return 0			
8	Modbus safety timeout	unsigned integer	Timeout setting for no Modbus communication. After time runs out, output(s) is/are set to 0	0–60	0 = no timeout 60 = 60 minutes	0
9	Modbus network resistor termination (NBT)	unsigned integer	Set device as end device of the line / or not by connecting NBT	0–1	0 = NBT disconnected 1 = NBT connected	0
10	Modbus registers reset	unsigned integer	Resets Modbus Holding registers to default values. When finished this register is automatically reset to '0'	0–1	0 = Idle 1 = Reset Modbus Registers	0
11	Minimum temperature range	unsigned integer	Minimum value of temperature range, cannot be set higher than maximum temperature range minus 5°C	-300–(Max - 50)	100 = 10,0°C	0
12	Maximum temperature range	unsigned integer	Maximum value of temperature range, cannot be set less than minimum temperature range plus 5°C	(Min + 50)–700	500 = 50,0°C	500

HOLDING REGISTERS						
		Data type	Description	Raw data range	Values	Factory default values
13	Minimum temperature alert	unsigned integer	Minimum temperature alarm value	Min. temperature range—Max. temperature alarm	500 = 50,0°C	0
14	Maximum temperature alert	unsigned integer	Maximum temperature alarm value	Min. temperature alarm— Max. temperature range	500 = 50,0°C	500
15–18			Reserved, return 0			
19	Minimum relative humidity range	unsigned integer	Minimum value of relative humidity range, cannot be set higher than maximum relative humidity range minus 5%	0—(Max - 50)	200 = 20,0 % rH	0
20	Maximum relative humidity range	unsigned integer	Maximum value of relative humidity range, cannot be set less than minimum relative humidity range plus 5%	(Min + 50)—1000	850 = 85 % rH	1.000
21	Minimum relative humidity alert	unsigned integer	Minimum relative humidity alarm value	Min. relative humidity range—Max. relative humidity alarm	200 = 20,0 % rH	0
22	Maximum relative humidity alert	unsigned integer	Maximum relative humidity alarm value	Min. relative humidity alarm—Max. relative humidity range	850 = 85 % rH	1.000
23	Minimum CO ₂ range	unsigned integer	Minimum CO ₂ range, cannot be set higher than maximum CO ₂ range minus 100 ppm	0—(Max - 100)	1.000 = 1000 ppm	400
24	Maximum CO ₂ range	unsigned integer	Maximum CO ₂ range, cannot be set less than minimum CO ₂ range plus 100 ppm	(Min + 10)—2.000	2.000 = 2.000 ppm	2.000
25	Minimum CO ₂ alert	unsigned integer	Minimum CO ₂ alarm value	Min. CO ₂ range—Max. CO ₂ alarm	400 = 400 ppm	400
26	Maximum CO ₂ alert	unsigned integer	Maximum CO ₂ alarm value	Min. CO ₂ alarm—Max. CO ₂ range	2.000 = 2.000 ppm	2.000
26–39			Reserved, return 0			
40	CO ₂ module self-calibration	unsigned integer	Enables or disables the CO ₂ module self calibration technique. If enabled it is advisable that the CO ₂ concentration drops to outside level (400 ppm) in a 7 day period.	0—1	0 = Disabled 1 = Enabled	1

HOLDING REGISTERS

		Data type	Description	Raw data range	Values	Factory default values
41	Output 1 type (T)		Select analogue / modulating output 1 type	1–3	1 = 0–10 VDC 2 = 0–20 mA 3 = PWM	1
42	Output 1 overwrite (T)	unsigned integer	Enables the direct control over the temperature output	0–1	0 = Disabled 1 = Enabled	0
43	Output 1 overwrite value (T)	unsigned integer	Overwrite value for output 1	0–1.000	0 = 0 % 1.000 = 100%	0
44	Internal voltage source selection Output 1 (T)	unsigned integer	Selection of internal voltage source for PWM output 1	0 - 1	0 = 3,3 VDC 1 = 12,0 VDC	0
45–50			Reserved, return 0			
51	Output 2 type (rH)	unsigned integer	Select analogue / modulating output 2 type	1–3	1 = 0–10 VDC 2 = 0–20 mA 3 = PWM	1
52	Output 2 overwrite (rH)	unsigned integer	Enables the direct control over the relative humidity output	0–1	0 = Disabled 1 = Enabled	0
53	Output 2 overwrite value (rH)	unsigned integer	Overwrite value for output 2	0–1.000	0 = 0 % 1.000 = 100 %	0
54	Internal voltage source selection Output 2 (rH)	unsigned integer	Selection of internal voltage source for PWM output 2	0–1	0 = 3,3 VDC 1 = 12,0 VDC	0
55–60			Reserved, return 0			
61	Output 3 type (CO ₂)	unsigned integer	Select analogue / modulating output 3 type	1–3	1 = 0–10 VDC 2 = 0–20 mA 3 = PWM	1
62	Output 3 overwrite (CO ₂)	unsigned integer	Enables the direct control over the CO ₂ output	0–1	0 = Disabled 1 = Enabled	0
63	Output 3 overwrite value (CO ₂)	unsigned integer	Overwrite value for output 3	0–1.000	0 = 0 % 1.000 = 100 %	0

HOLDING REGISTERS						
		Data type	Description	Raw data range	Values	Factory default values
64	Internal voltage source selection Output 3 (CO ₂)	unsigned integer	Selection of internal voltage source for PWM output 3	0–1	0 = 3,3 VDC 1 = 12,0 VDC	0
65–70			Reserved, return 0			

Note: The holding registers can be managed via the following Modbus commands: “Read Holding Registers”, “Write Single Register” or “Write Multiple Registers”.

The free Sentera configuration and monitoring software 3SModbus can be downloaded via: <https://www.sentera.eu/en/3SMCenter>