

W-BUTEMSTM01

Emergency stop push-button

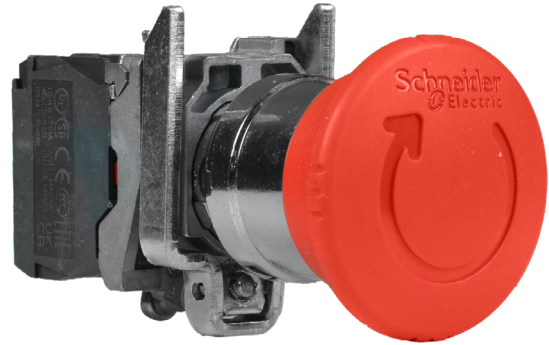
Description

W-BUTEMSTM01 is a push-button designed for complete emergency shutdown of devices. It incorporates mechanical latching, which ensures that the button remains engaged until it is manually released by turning of the red mushroom button.

W-BUTEMSTM01 provides the following benefits:

- **Safety:** It ensures immediate emergency shutdown preventing accidents and providing protection of personnel.
- **Reliable Performance:** Long mechanical lifespan and consistent operation.
- **Easy to use:** A red mushroom button allowing quick activation.
- **Secure Reset Mechanism:** The button requires turning to be released, which prevents accidental reset and ensures controlled restart.
- **Applicability:** Suitable for various applications in industrial settings.

With its robust and user-friendly design, W-BUTEMSTM01 is an indispensable component in emergency stop systems.



Key Features

- **User-Friendliness:**
 - Simple push activation for quick emergency response
 - Turn-to-reset mechanism for controlled restart
- **Panel Mounting**
 - 22,5 mm mounting diameter for easy installation
- **Electrical Contact**
 - 1 slow-break NC contact ensures reliable disconnection
- **Button Design**
 - Red mushroom button for high visibility
 - 40 mm diameter for easy operation
- **Durability**
 - Resistant to vibration and shock for enhanced reliability

Area of Use

- Emergency button to stop or disable the motor when there is a risk of injury or the workflow requires stopping.

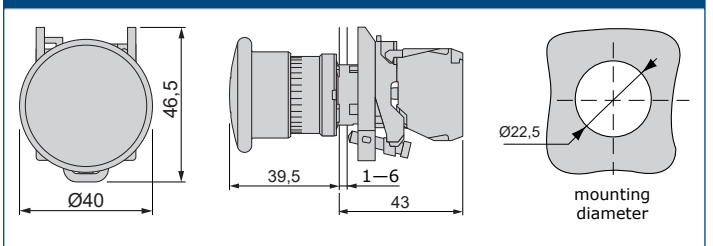
Technical Specifications

Mounting diameter	22,5 mm	
Clamping thickness	1–6 mm	
Type of operator	Mechanical latching, turn to release	
Operator profile	Red mushroom Ø 40 mm, unmarked	
Contacts type and composition	1 NC	
Rated operational current	0,1 A at 600 V, DC-13, Q600, IEC 60947-5-1 0,27 A at 250 V, DC-13, Q600, IEC 60947-5-1 0,55 A at 125 V, DC-13, Q600, IEC 60947-5-1 1,2 A at 600 V, AC-15, A600, IEC 60947-5-1 3 A at 240 V, AC-15, A600, IEC 60947-5-1 6 A at 120 V, AC-15, A600, IEC 60947-5-1	
Contact operation	Slow-break	
Electrical durability	1000000 cycles, DC-13, 0,2 A at 110 V, operating rate <3600 cyc/h, load factor: 0,5, IEC 60947-5-1 appendix C 1000000 cycles, DC-13, 0,5 A at 24 V, operating rate <3600 cyc/h, load factor: 0,5, IEC 60947-5-1 appendix C 1000000 cycles, AC-15, 2 A at 230 V, operating rate <3600 cyc/h, load factor: 0,5, IEC 60947-5-1 appendix C 1000000 cycles, AC-15, 3 A at 120 V, operating rate <3600 cyc/h, load factor: 0,5, IEC 60947-5-1 appendix C 1000000 cycles, AC-15, 4 A at 24 V, operating rate <3600 cyc/h, load factor: 0,5, IEC 60947-5-1 appendix C	
Ambient conditions	Operating temperature	-40–70 °C
	Storage temperature	
Protection class	IP66, IEC 60529	

Connections

Connection terminals	Screw clamp terminals, $\leq 2 \times 1,5 \text{ mm}^2$ with cable end conforming to IEC 60947-1
	Screw clamp terminals, $\geq 1 \times 0,22 \text{ mm}^2$ without cable end conforming to IEC 60947-1

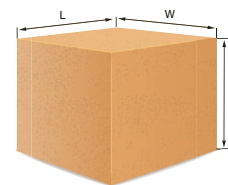
Dimensions



Standards

- Commission Delegated Directive (EU) 2015/863 of 31 March 2015 amending Annex II to Directive 2011/65/EU of the European Parliament and of the Council as regards the list of restricted substances
- WEEE 2012/19/EC

Packaging



Article	Packaging	Length [mm]	Width [mm]	Height [mm]	Net weight [kg]	Gross weight [kg]
W-BUTEMSTM01	Unit (1 pc.)	54	44	88	0,118	0,121