



RDPU

Universal programmable controller

RDPU - Remote Domestic Processing Unit - is a universal programmable controller that requires a dedicated firmware for a specific application. The user interacts with the graphical user interface via a 5" multi-touch capacitive TFT-LCD display. Thanks to the built-in Modbus RTU communication, various HVAC sensors and / or fan speed controllers can be connected to this device via a simple RJ45 connector.

Key features

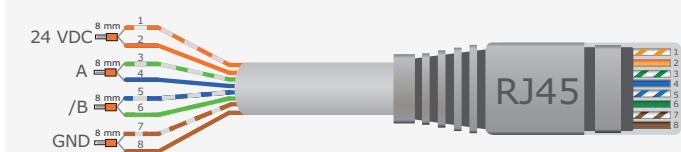
- Six RJ45 connectors for Modbus RTU and 24 VDC power supply connection - one to connect the RDPU to a Master system (BMS / configuration tool) and five to control up to 247 slave devices.
- Connects to all Sentera sensors / fan speed controllers with Modbus RTU
- Wall-mounted enclosure

Technical specifications

Display size	5"	
Display type	Capacitive LCD-TFT	
Connection	RJ45 connector	
Power supply	24 VDC, Power over Modbus	
Maximum power consumption	2,4 W	
Nominal or average power consumption in normal operation	1,8 W	
Imax	100 mA	
Connection type	RJ45	
Protection class	IP30 (according to EN 60529)	
Ambient conditions	Temperature	0—50 °C
	Rel. humidity	5—85 % rH (non-condensing)

Wiring and connections

Pin 1	24 VDC	Supply voltage
Pin 2	24 VDC	Supply voltage
Pin 3	A	Modbus RTU communication, signal A
Pin 4	A	Modbus RTU communication, signal A
Pin 5	/B	Modbus RTU communication, signal /B
Pin 6	/B	Modbus RTU communication, signal /B
Pin 7	GND	Ground, supply voltage
Pin 8	GND	Ground, supply voltage



Area of use

- Residential and commercial buildings
- For indoor use only

Standards

- Low Voltage Directive 2014/35/EC:
 - » EN 60529:1991 Degrees of protection provided by enclosures (IP Code) Amendment AC:1993 to EN 60529;
- EMC directive 2014/30/EC:
 - » EN 60730-1:2011 Automatic electrical controls for household and similar use - Part 1: General requirements;
 - » EN 61000-6-1:2007 Electromagnetic compatibility (EMC) - Part 6-1: Generic standards - Immunity for residential, commercial and light-industrial environments;
 - » EN 61000-6-3:2007 - Part 6-3: Generic standards - Emission standard for residential, commercial and light-industrial environments Amendments A1:2011 and AC:2012 to EN 61000-6-3;
- WEEE Directive 2012/19/EC
- RoHS Directive 2011/65/EC

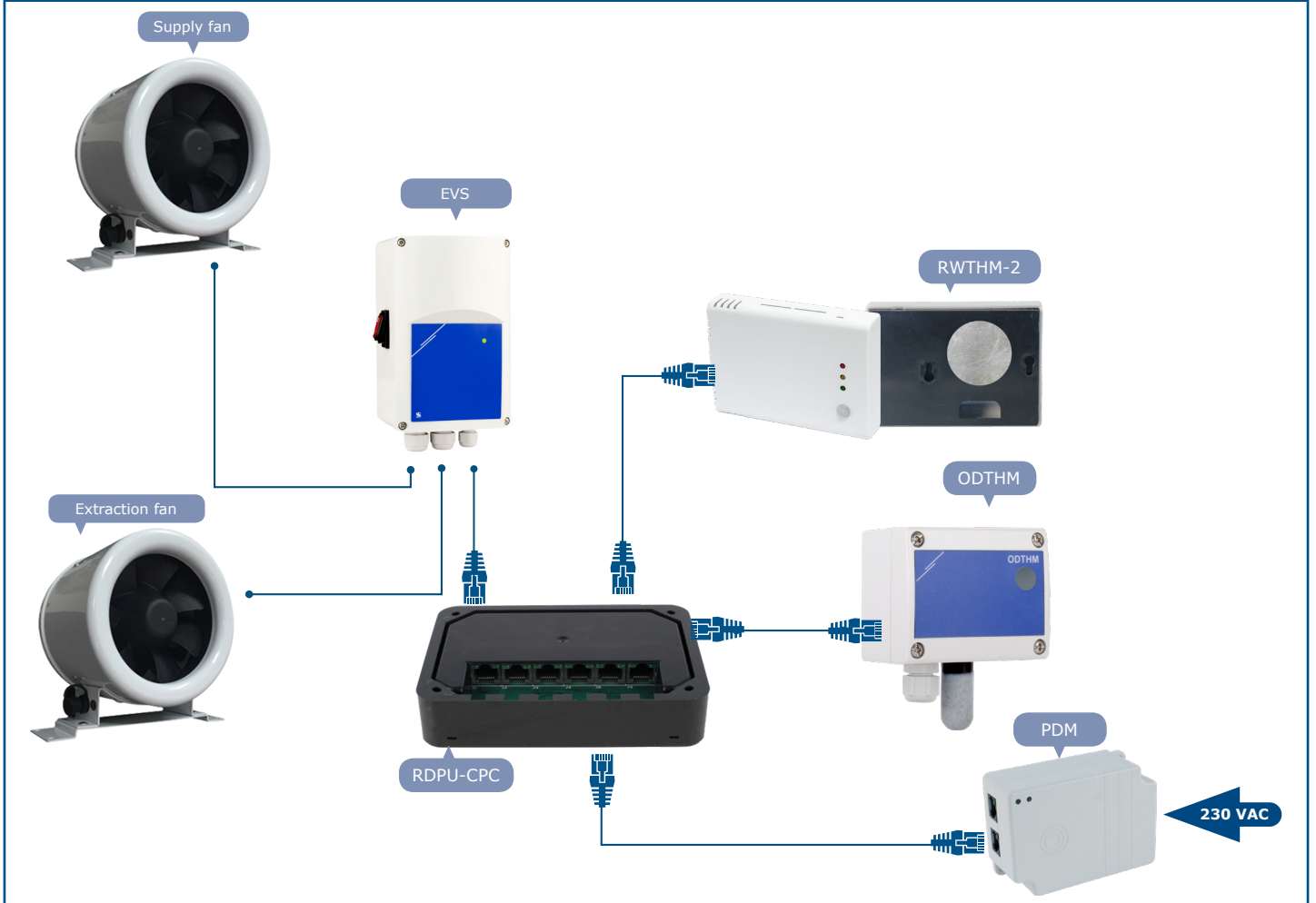




RDPU

Universal programmable controller

Application example

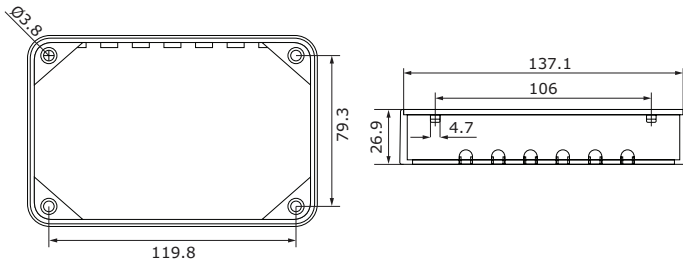
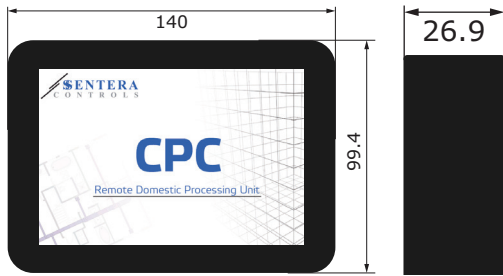




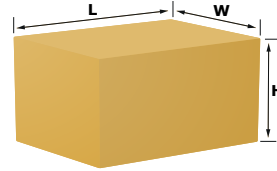
RDPU

Universal programmable controller

Fixing and dimensions



Packaging



Packaging	Length [mm]	Width [mm]	Height [mm]	Net weight	Gross weight
Unit (1 pc.)	160	120	50	0,273 kg	0,282 kg
Box (45 pcs.)	590	380	280	12,285 kg	13,55 kg