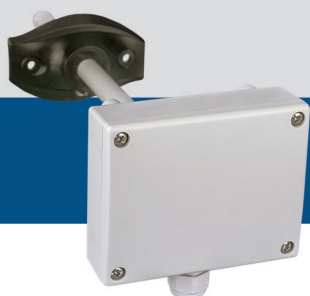


DSTHM-2

Combined T and rH duct transmitter



The DSTHM-2 series are combined duct transmitters which measure temperature and relative humidity. Based on the temperature and relative humidity measurements, the dew point is calculated. They are Power over Modbus supplied and all parameters are accessible via Modbus RTU.

Key features

- Selectable temperature and relative humidity ranges
- Bootloader for updating the firmware via Modbus RTU communication
- Modbus RTU (RS485)
- Long-term stability and accuracy

Technical specifications

Supply voltage	24 VDC, Power over Modbus	
Maximum power consumption	0,36 W	
Nominal power consumption	0,27 W	
Imax	15 mA	
Typical range of use	Temperature range	-30—70 °C
	Relative humidity range	0—100 % rH (non-condensing)
Accuracy	± 0,4 °C (range -30—70 °C)	
	± 3% rH (range 0—100 %)	
Min. airflow velocity	1 m /s	
Protection standard	Enclosure: IP54, Probe: IP20	



Article codes

	Supply	Connection
DSTHM-2	24 VDC, PoM	RJ45

Area of use

Monitoring duct temperature and relative humidity in HVAC applications

Modbus registers



The Sensistant Modbus configurator allows you to easily monitor and/or configure Modbus parameters.



The parameters of the unit can be monitored / configured through the 3SMODBUS software platform. You can download it from the following link:
<https://www.sentera.eu/en/3SMCenter>

For more information about the Modbus registers, please refer to the product Modbus Register Map.

Standards



- EMC Directive 2014/30/EC:
 - EN 61326-1:2013 Electrical equipment for measurement, control and laboratory use - EMC requirements - Part 1: General requirements
 - EN 61326-2-3:2013 Electrical equipment for measurement, control and laboratory use - EMC requirements - Part 2-3: Particular requirements - Test configuration, operational conditions and performance criteria for transducers with integrated or remote signal conditioning
- WEEE Directive 2012/19/EC
- RoHS Directive 2011/65/EC

Wiring and connections

24 VDC	Supply voltage 24 VDC
GND	Ground
A	Modbus RTU communication, signal A
/B	Modbus RTU communication, signal /B

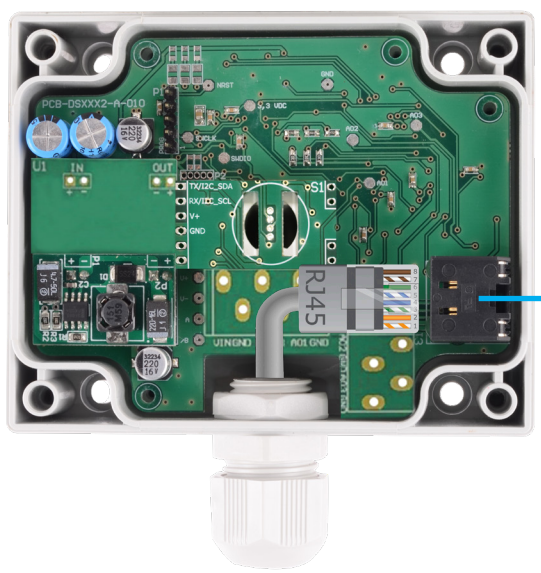


DSTHM-2

Combined T and rH duct transmitter



Settings



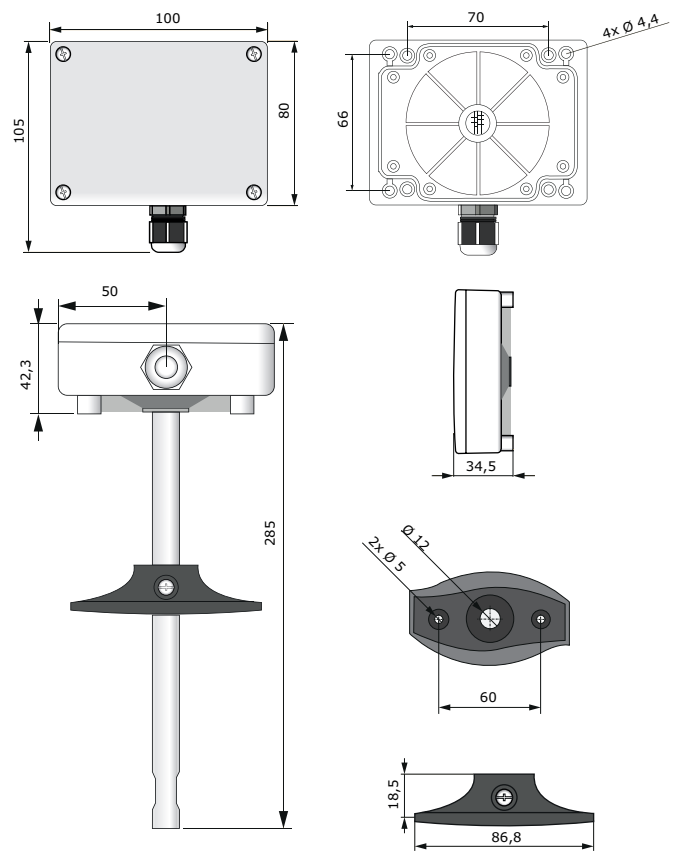
1

1 - RJ45 socket

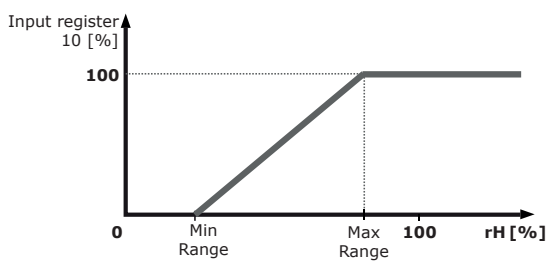
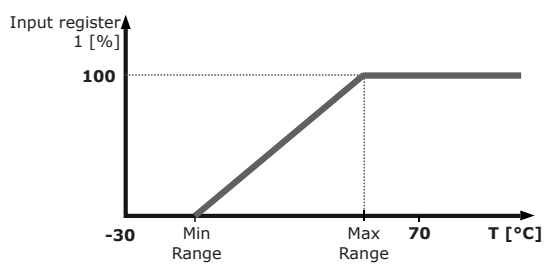


Plug the communication and power cable into the socket

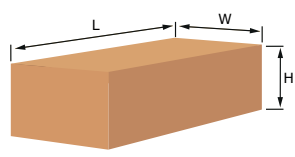
Fixing and dimensions



Operational diagram(s)



Packaging



Article	Packaging	Length [mm]	Width [mm]	Height [mm]	Net weight	Gross weight
DSTHM-2	Unit (1 pc.)	310	115	115	0,15 kg	0,258 kg
	Box (20 pcs.)	590	380	505	3,00 kg	6,39 kg