



SFPR1

230 VAC transformer controller with gas flow control

The SFPR1 series of transformer fan speed controllers regulate the rotational speed of single-phase voltage controllable motors (230 VAC / 50–60 Hz) by varying the output voltage. They are equipped with auto-transformer(s) and control the speed in five steps. The series feature TK monitoring for thermal motor protection and an input for remote start/stop (or thermostat). The controllers also feature a sensing input for a flow detector (or pressure switch) which can regulate a gas valve / actuator via a relay output. The gas valve output will only be activated if the sensing input is closed within 60 seconds after switching on. The controllers up to 7,5 A are available in plastic enclosure, while the models above 7,5 A are available in a metal enclosure.

Key features

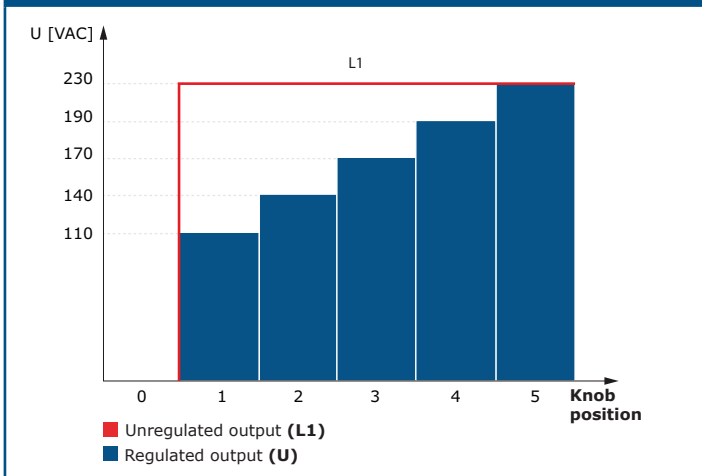
- Wide power range
- 5-step rotary switch for manual control plus off-position
- Sensing input for a flow detector (or pressure switch)
- Potential free relay output (COM/NO/NC), controlled by a flow / pressure sensing input (to switch a gas valve / actuator)
- Input for remote start/stop or thermostat
- LED status indication

Technical specifications

Power supply	230 VAC / 50–60 Hz	
Unregulated output	230 VAC / 2 A	
Protection standard	IP54 (according to EN 60529)	
Ambient operating conditions	Temperature	-20–35 °C
	Rel. humidity	5–95 % rH (non-condensing)



Operational diagram



Article codes

Article code	Rated max. current [A]	Fuse [A]
SFPR1-35L22	3,5	(5*20 mm) T-5,0 A-H
SFPR1-50L22	5	(5*20 mm) T-8,0 A-H
SFPR1-75L22	7,5	(5*20 mm) T-12,5 A-H
SFPR1100L22	10	(6*32 mm) T-16,0 A-H
SFPR1130L22	12	(6*32 mm) T-20,0 A-H

Area of use

- Fan speed control of voltage controllable motors (pumps and fans) in ventilation systems
- For indoor use only

Wiring and connections

L, N	Supply voltage 230 VAC ±10 % / 50–60 Hz
PE	Earth terminal
L1, N	Unregulated output, 230 VAC / 2 A
N, U	Regulated output to the motor (0 / 110 / 140 / 170 / 190 / 230 VAC ±5 %)
PE	Earth terminal
COM, NO, NC	Changeover relay contact (230 VAC / 2 A)
TK, TK	TK monitoring for thermal motor protection
NC, NC	Input - normally closed contact for remote ON/OFF switching or thermostat
FL, FL	Flow / pressure sensing contacts
Connections	Cable gland clamping range: 8–13 mm

Voltage

Knob position	0	-	1	2	3	4	5
Wires		-					
Regulated output [VAC]							
L22 version	0	80*	110	140	170	190	230
Unregulated output [VAC]							
L1	0	230*	230	230	230	230	230

* Available but not connected.

** If more than 5 output voltages are available, it is possible to adjust the 5 steps by changing the internal wiring.



SFPR1

230 VAC transformer controller with gas flow control

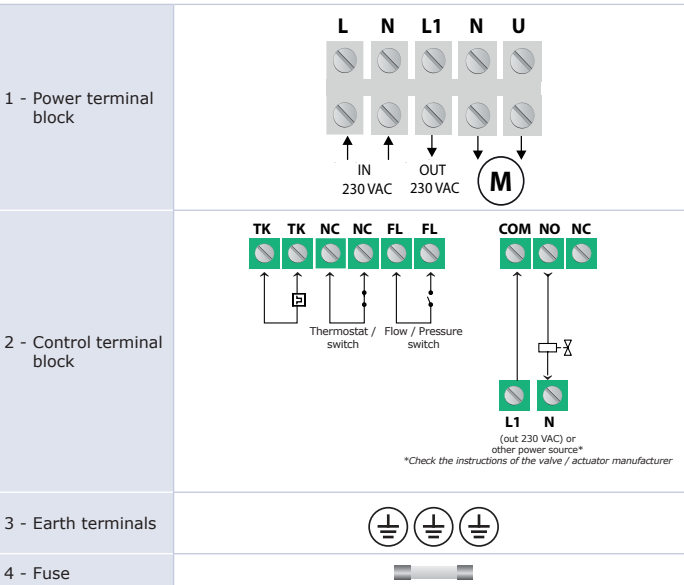
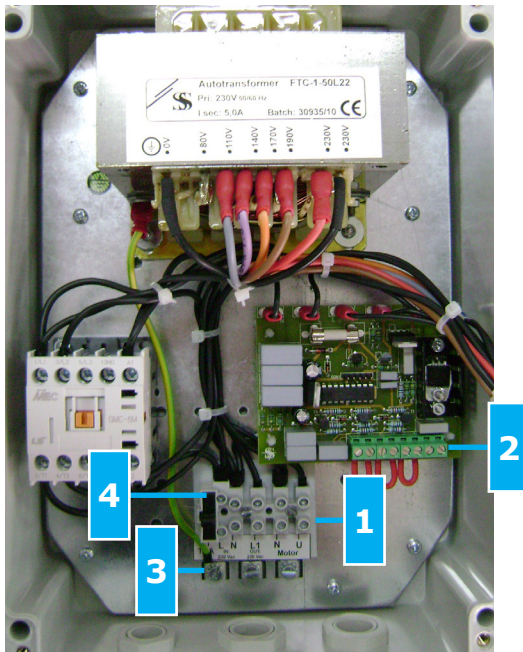
Standards

- Low Voltage Directive 2006/95/EC
- EN 61558-1:2005/A1:2009
- EN 61558-2-13
- WEEE Directive 2012/19/EU
- RoHS Directive 2011/65/EU

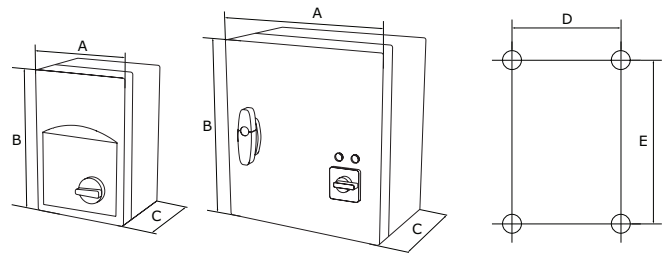


Legend

SFPR1-50L22

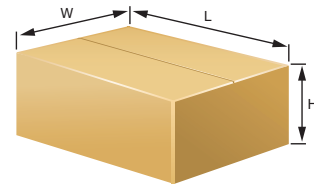


Fixing and dimensions



Article code	A [mm]	B [mm]	C [mm]	D [mm]	E [mm]	Enclosure
SFPR1-35L22	200	305	155	183	236	plastic (R-ABS, UL94-V0, grey RAL 7035)
SFPR1-50L22	200	305	155	183	236	
SFPR1-75L22	200	305	155	183	236	
SFPR1100L22	300	325	185	255	255	sheet steel (RAL7035, polyester powder coating)
SFPR1130L22	300	325	185	255	255	

Packaging



Article	Packaging	Length [mm]	Width [mm]	Height [mm]	Net weight [kg]	Gross weight [kg]
SFPR1-35L22	Unit (1 pc.)	341	256	156	5,00	5,75
	Pal. (96 pcs.)	1.200	800	1.800	480,00	567,00
SFPR1-50L22	Unit (1 pc.)	341	256	156	5,60	6,35
	Pal. (96 pcs.)	1.200	800	1.800	537,60	634,60
SFPR1-75L22	Unit (1 pc.)	341	256	156	8,40	9,15
	Pal. (96 pcs.)	1.200	800	1.800	638,40	710,40
SFPR1100L22	Unit (1 pc.)	340	320	200	15,70	16,28
	Pal. (48 pcs.)	1.200	800	1.430	753,60	796,44
SFPR1130L22	Unit (1 pc.)	340	320	200	15,70	16,28
	Pal. (48 pcs.)	1.200	800	1.430	753,60	796,44